



Consolidated
Planning Group

Special Needs Planning

MEDICAID WAIVERS, SSI ELIGIBILITY,
AND PRESERVING BENEFITS



Texas Medicaid Home and Community Based (HCBS) Waivers

- Community Living Assistance and Support Services (CLASS)
- Deaf Blind with Multiple Disabilities (DBMD)
- Home and Community-based Services (HCS)
- Texas Home Living (TxHmL)
- Medically Dependent Children's Program (MDCP)
- STAR PLUS Waiver (1115 demonstration waiver)
- Youth Empowerment Services (YES)
- Community First Choice



Community Living Assistance and Support Services (CLASS): gives home and community-based supports to children and adults with related conditions. There are over 200 related conditions, like cerebral palsy and spina bifida. The related condition must have occurred before the child was age 22.

Deaf Blind with Multiple Disabilities (DBMD): gives services for children and adults who are deaf-blind or have a related condition that leads to deaf-blindness, and who have another disability.

Home and Community-based Services (HCS): gives services and supports to children and adults with an intellectual disability (ID) or a related condition who live with their families, in their own homes, or in small group homes with no more than 4 people.

Medically Dependent Children Program (MDCP): gives services to children and adults who are 20 and younger who are medically fragile as an alternative to receiving services in a nursing facility.

STAR+PLUS Home and Community-based Services (HCBS): gives services to adults over the age of 21 to keep them in their community and not in a nursing home facility.

Texas Home Living (TxHmL): gives services to children and adults with an intellectual disability (ID) or a related condition who live in their own home or their family's home.

Youth Empowerment Services (YES): a 1915(c) Medicaid program that gives home and community-based services to children under the age of 19 with serious mental, emotional and behavioral difficulties.

Community First Choice: Allows states to provide home and community-based attendant services and supports to Medicaid recipients with disabilities. Help with activities of daily living and health-related tasks through hands-on assistance, supervision or cueing.

Services to help the individual learn how to care for themselves.

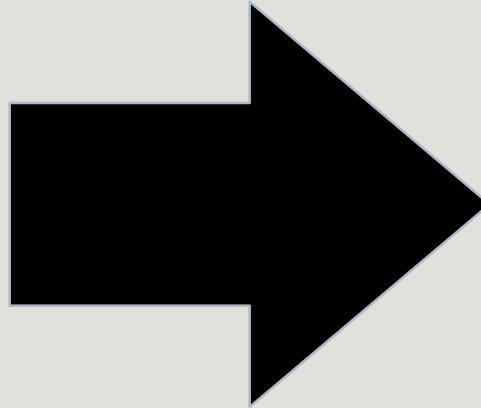
Waiver General Eligibility

- **MOST WAIVERS ARE FOR ALL AGES (MDCP AND STAR PLUS ARE THE EXCEPTIONS)**
 - **FINANCIAL ELIGIBILITY:**
 - For all waivers except TxHmL
 - Within 300% of SSI (\$2,382)
 - Does not look at parental income
-
- **Individuals must meet the functional eligibility criteria for the specific waiver.**

**NOTE: ELIGIBILITY IS NOT DETERMINED UNTIL AN INDIVIDUAL COMES TO THE TOP OF THE WAIT LIST*

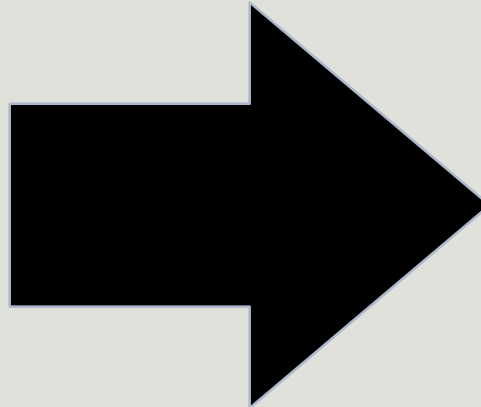
Two Funding Paths for Waivers

**Interest List
“Wait List”**



- First come first serve
- Statewide
- Can wait as long as 14 years

**Promoting
Independence**



- Prevents (diverts) individuals from institutions
 - Addresses Crisis
- Helps individuals move from (transition) institutions

Waitlist



What is a
LIDDA???

- MDCP, CLASS, AND DBMD:
- CALL: 1-877-438-5658

- HCS, TxHmL, and CFC:

-Contact your local intellectual and developmental disability authority (LIDDA)

-To find out your local authority, go to:

<https://apps.hhs.texas.gov/contact/search.cfm>

- Star Plus:
Call: 877-782-6440

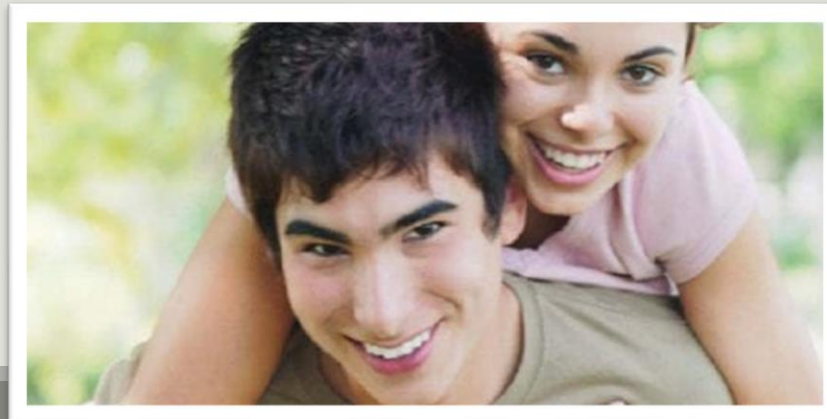
Promoting Independence

Crisis Diversion:

- If you or your loved one is in crisis, you can contact your LIDDA and tell them you would like to request an HCS crisis diversion waiver
 - The LIDDA will help with the process
 - Make sure you are involved in the process

PASRR

Diversion and transition from Nursing Facilities and/or specialized services



How do I get started with Special Needs Planning?

- ❑ Work with a special needs planner to help you formulate a plan
- ❑ Gather all necessary planning documents

- ❑ Develop a Letter of Intent
- ❑ Think about your vision of how you hope things will look for your special needs child



How will my child's care be funded?

- Preserve eligibility for State and Federally funded programs
- Establish a Special Needs Trust for their future care.
- Current life insurance and assets provide funding for the special needs trust
- ABLE Account



THINGS THAT SHOULD BE ON YOUR SPECIAL NEEDS PLANNING RADAR:



- How to develop a comprehensive Special Needs Care Plan
- Future Care Cost Estimates
- Texas Waivers-Interest Lists
- SSI & SSDI-Understanding the differences and knowing when to apply
- ABLE Accounts
- Beneficiary Designations
- Directing Child Support to a 1st Party Special Needs Trust
- Special Needs Trusts-How to fund them
- Start touring Residential Living Facilities at age 15
- Guardianship, POA, HCPOA or Supported Decision Making
- Post High School Education Options
- Waiting Lists for Community based care facilities
- Child Support Paid to the Trust

MEET THE CONSOLIDATED PLANNING GROUP TEAM!



Allison Schaberg
Owner/Advisor



Jeff Schaberg
Owner/Advisor



Michelle Morris
Advisor



Andrew Morris
Advisor



Daylin Leopold
Operations Manager



Jessica Hoffman
Operations Manager



Meredith Haynes
Marketing Director



The Premier Association of Financial Professionals®





Consolidated
Planning Group

FOR A FREE, PERSONALIZED CONSULTATION



FOR MORE INFORMATION

Consolidated Planning Group

281-690-1177

contact@cpgcares.net

**We invite you to take a moment to Like and Follow us on
Facebook & Subscribe to our YouTube Channel!**

www.facebook.com/consolidatedplanning
www.youtube.com/consolidatedplanninggroup